



TORO 1000

Main features:

Fan less design

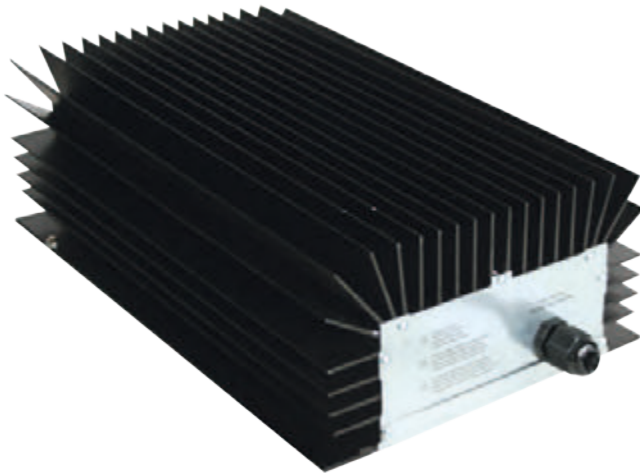
IP65

Integrated or external charging indicator

Power from 360W up to 720W

Current from 15A to 30A

Available in 12V, 24V, 36V or 48V



DIMENSIONS (LxWxH): 280x105x228mm – 11.02x4.13x8.98 in

WEIGHT: 4,80 Kg - 10.58 lbs

PROTECTION GRADE IP65

INPUT VOLTAGE: Universal 100 + 240 Vac – 50-60 Hz



Battery Voltage	Battery Range		Charging Current	Model
	5h	20h		
12	200÷280 Ah	245÷350 Ah	30A	12-30
24	200÷280 Ah	245÷350 Ah	30A	24-30
36	120÷195 Ah	150÷240 Ah	20A	36-20
48	100÷150 Ah	130÷185 Ah	15A	48-15

